



SURVEY
EX-SERVICEMEN'S
ASSOCIATION

SOUTH AUSTRALIA



NEWSLETTER No. 18
APRIL 1997

NEWSLETTER COMMITTEE

George Ricketts

GLEN OSMOND S.A. 5064

Telephone (08) 275 2172

Alex Munro

COLONEL LIGHT GARDENS S.A. 5041

Telephone (08)



SICK LIST

Clem Sargent was in hospital some time in January for a hernia operation, which was successful according to my brief report. Perhaps a bit early at this time for a complete recovery, but we all hope it will not be too long Clem.

Bob Love spent early March in hospital undergoing an eye operation. He reported a 'spot' problem in one of his eyes to his doctor, and was a bit surprised to find himself on the operating table two days later. The operation was a success in that the eye seems a little better each day so far, so let's hope the improvement continues to a complete recovery fairly soon. Good luck Bob.

ANZAC DAY

This year we would like to see an increase in the numbers marching under the Survey banner. If you have any doubts about your eligibility to march, you have no worries. Let me quote from the Executive Instructions issued by the march organisers - "All persons are eligible to march who have served in the Armed Forces of the Commonwealth of Australia, British Commonwealth countries or any country which, at the time of such service, was an ally of Australia".

This simply means that every one in Survey can march.

Apart from smaller functions throughout the year, we would like to make Anzac Day our main get-together. After the march, around midday, we will gather at the Queens Arms Hotel in Wright St as we did last year. After drinks we have lunch - at the individual's choice - followed by the AGM about 2pm, this should only last about half an hour.

For those who have not marched with us previously, we gather outside the SGIC building in Victoria Square between 9.15 and 9.30. (For those who marched last year it's back to our original forming-up place) If you have medals, wear them; If you have your deceased father's medals you can wear them on the right side.

Please give this serious thought for we want to see as many as possible marching this year. The time will come when WW2 people will have to give it away so it is up to the younger brigade to take over. See you there.

GEORGE RICKETTS

OPENING OF THE NEW MUSEUM

The new museum built at the School of Engineering, Moorebank, will be officially opened on Friday 18 April at 11am. The "RASvy Historical Collection" will be a highlight of the new museum, based I suppose on the old museum at Bonegilla. An invitation has been extended to all former members to attend, but as the timings are a bit tight for the publication date of this newsletter, a ring-around for any takers will be arranged.

After the official opening, the Geomatic Engineering Wing will be open for inspection, followed by a lunch function until around 1.30pm.

A PINCHED SIGN

Remember the unit sign that stood at the north end of 4 Fd Svy premises, outside the original front entrance, for at least 30 years. Bob Mills heard recently how the sign disappeared. Apparently a few of the lads from 1 Topo Svy were in Adelaide not long back, and removed the sign by stealth and not without some trouble I should imagine as it was about 5x3ft in size. It is now somewhere in Enoggera Barracks, my bet is the boozier.

CORPS BADGE

Remember the metre high Survey Corps badge and unit designation '4 FIELD SURVEY SQUADRON' above the squadron building at Keswick Barracks. Everyone can of course, but over many years no one could ever tell me for sure of what the badge was made, not even George Ricketts, and he was the OC when it was put up. There were many guesses such as aluminium, plaster, bronze, cast iron, plastic, etc, but no person definitely knew. Having now examined the badge at close range, I think it is made from bronze including the letters, which are inlaid with baked enamel in the Corps colour.

The badge and letters are now stored pending being displayed in the new museum at Keswick, although no final decision has been made. The old building has been completely refurbished for use by HQ 9 Bde, and the contractors were able to salvage the badge without damage. This had been requested with the project manager Maj Jim Smith, and our thanks to him for his kind help in arranging everything. More on this later.

LEN BEADELL MEMORIAL

The unveiling of the memorial last year by Anne Beadell, to honour the achievements of her late husband, was covered briefly in a previous newsletter. Pam and John Harrison attended the ceremony, and John kindly posted me two reports of the event. One report by Neil Edwards as SA President and National Vice-President of the Institution of Engineering and Mining Surveyors (IEMS) appeared in 'Surveying Australia' of Sep 96, and the other was from the 'West Coast' magazine, published by the WA Association of 4WD Clubs. Both were well presented but a bit long for our newsletter.

Mt Beadell is a relatively low feature, standing about 30 metres above the surrounding country, and situated over 200km NW from Warburton. The idea for a memorial was first mooted by the Qld 4WD Association, and later in conjunction with the IEMS committee and Australian Geographic, the whole event was brought into being, assisted by numerous sponsors.

John and Pam went in style in a Landrover Discovery, one of two 4WD vehicles provided by Rover Australia, for the local contingent. The journey from Adelaide to Mt Beadell and return took 9 days in all, covering around 4,760km, and both vehicles performed without fault.

At the time of his death, Len was president of the National 4WD Council, and now Anne Beadell has accepted the position, which would explain the interest by various 4WD Clubs throughout Australia.

I suppose the challenge of travelling into such a remote area on Len's old range roads was something of a lure for most club members, not to mention many bush surveyors.

The size of the group surprised me, with 163 people and 71 vehicles, consisting of 4WD Club members, folk from Warburton community, IEMS members from around Australia and Anne Beadell's family and friends. The memorial is in the form of a replica theodolite made from stainless steel mounted over a plaque, with a sign board erected nearby detailing the history of the event. The replica is set in a security cage because, sad as it is, vandalism to heritage and other monuments is not uncommon in the outback. So ended the ceremony, with the journey home still ahead.

During the trip in, water was supplied to a lone German backpacker walking the track to Giles and about 100km from Warburton, definitely a man of fortitude.

An interesting development with the range roads is the application by the Shire of Ngaanyatjarrika to close some of the roads and have them deleted from future mapping and reprints, except those commonly used for access to the various communities. This move has been opposed by the Shire of Wiluna, as they consider the roads are still useful, although in poor condition.



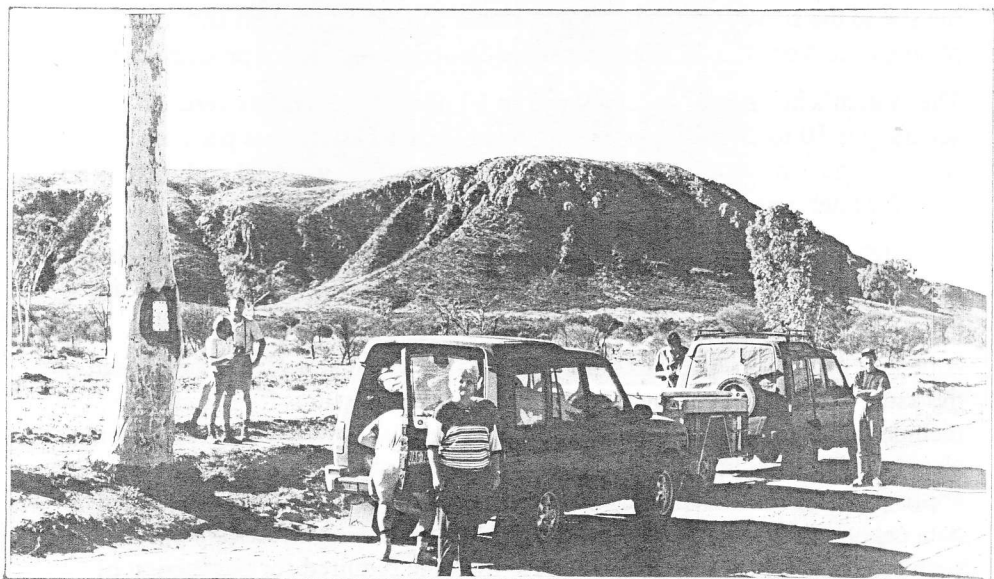
Members of the National Executive IEMS
at the Len Beadell memorial.



Mt Beadell. The memorial and visitors can be seen at the top.
By the Landrover is Pam Harrison with Bill Black and Arie Café.



Crowd at the Len Beadell memorial unveiling ceremony, showing part of the signboard and memorial,



Roadside stop on the Ayers Rock to Warburton Rd. One of Len's signs on the gum tree lists the names of the road construction crew for that section.

SURVEYING FROM SPACE

(from Sapper News)

At a recent demonstration hosted by 19th Chief Engineer Works, Mr Evan Bollard of Ultimate Positioning demonstrated the Trimble Navigation Global Positioning System.

The Trimble 'Geodetic Surveyor' is a dual frequency global positioning system (GPS) survey receiver capable of conducting the highest quality geodetic measurements using the constellation of 24 American GPS satellites to provide better accuracy over long baselines.

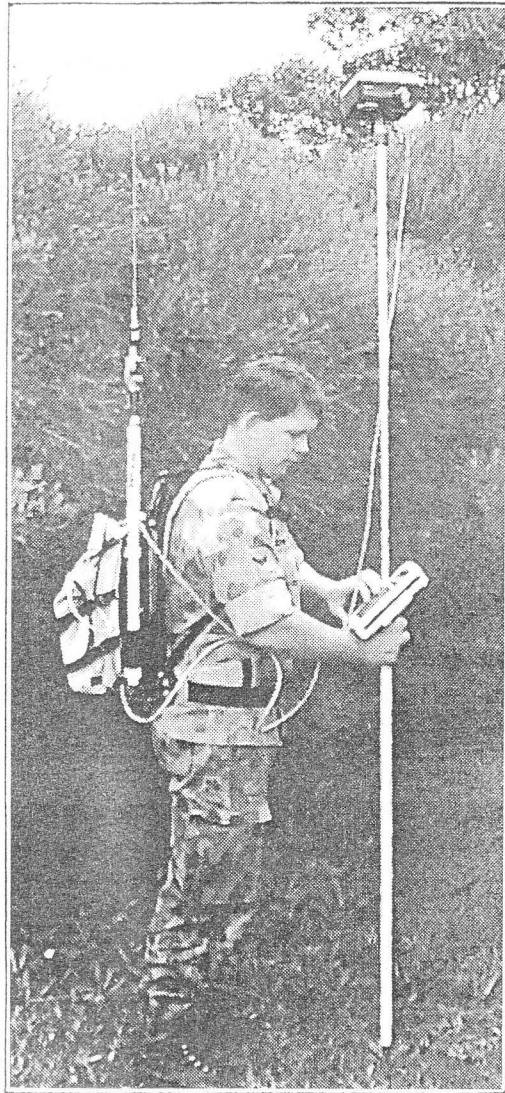
The base station and mobile station configuration along with the use of dual frequencies overcomes the accuracy limitations previously experienced with other GPSs. The Trimble system boasts the full range of static and pseudostatic to mobile (fast static and kinematics) surveying techniques. These techniques allow the operator to perform precise geodetic control measurements with minimal observation times. The ability to conduct mobile surveying is made possible by Trimble's 'GPSurvey' processing software.

The system is ideal for first order (high precision) geodetic control incorporating real-time surveying with the ability to transmit survey data from the site to the survey office using a portable computer, modem and mobile phone, or to store the data on a portable computer on site for processing later.

The system's horizontal accuracy is 5 to 10 millimetres and its vertical accuracy is 10 to 20 millimetres with a range of 10 kilometres per base station. The time required to set up the instruments is minimal and there is no need for intervisibility between the station and the set-out point.

Although GPS signals are still unable to penetrate high density barriers such as buildings and heavy tree canopies, off-set points can be established for later use by existing equipment such as the Total Station.

A benefit of the system is that it requires only one person to operate instead of the usual two-person survey team. Obviously applications for the system include initial set-out, contouring, and bulk earthworks control. The system is already being used in private industry for these tasks and for more precise applications. Productivity improvements on site will result from the speed of data capture in the field and when linked to a civil design software package such as GEOCOMP, it will also reduce the time required for production of designs.



Corporal Mark Tennent a surveyor from 19th Chief Engineer Works using a backpack mounted Geodetic Surveyor. This equipment allows an operator to carry out very quick surveys with an accuracy of +/- 10mm within 10km of a base station.

PEOPLE NEWS

ROGER REES

Received a letter from Roger last year saying that Effie had finally joined him from Wodonga and both were fully settled in Canberra. Roger reported that with the demise of RASvy, he is now part of a newly created Directorate of Military Geographic Information as a Map Research Officer.

He has retained a service link, as a member of the Army Individual Emergency Force. It doesn't seem all that long since Roger left Keswick Barracks, but daughter Maree is now married and son Aaron is studying at the TAFE college in Bendigo, so now he and Effie are on their own. Don't worry Roger, both will be back every time cash runs short.

The Rees household is at 50 Fullerton Crescent, Richardson, ACT 2905.

LUCKY EDDY

Recently spoke with mutual friends of Eddy Schultz, who met up with him while they were holidaying in Brisbane. I was told Eddy enquired at a TV store about a top of the range U-Beaut TV system he wished to buy, costing about \$5,000, but decided to defer the big buy decision. Next day he returned to the store, collared a salesman to do business, to be told he was the "Lucky Customer" for whatever reason, and the TV system was his for free. Lucky Eddy alright.

Eddy is still managing the long term project to upgrade the computer network at the University of Queensland.

DESI ASARIS

Desi now works part time only on Monday and Tuesday, in her work as an image data specialist down Netley way, but whether by choice or 'downsizing' I know not.

She has enlarged her skills portfolio, and for the remainder of the week is self employed as a masseuse and natural therapist. Naturally at this stage the business is in its infancy, so Desi could use any work put forward thru our membership, and is offering a 10% discount to us and ours.

Desi has a 'Massage Table will Travel' philosophy, and will visit throughout the Metropolitan and Hills areas or can work from home. She has studied the subject for some time now, and has certificates in the various natural therapies available and also a Diploma in Anatomy Physiology and Massage, so knows her work.

For anyone with aches, pains, stiffness or just generally run down, Desi might be the answer, and can be contacted at work Monday/Tuesday on 8226 4904 or at home during mornings and late evenings on 8339 5237.

Desi, best of luck in your new venture.

PETER CATES

Received a letter from LTCol. Peter Cates reporting he is now posted to the Directorate of Engineers, at Moorebank NSW, in the temporary position of SO1 Topo Spt.

His main role at the moment is to advise and assist with any problems during the transition of RASvy into RAE, with everything going well according to Peter.

DENNIS MARSHALL

While phoning a friend in Bendigo, Dennis Marshall's name was mentioned during the conversation. Dennis is still looking after wayward kids in Bendigo, with the St Luke's welfare group.

COL DARCH

Now settled in Perth, Col recently joined the UBD organisation, upgrading street directories and the like, and is very happy with the position according to Brett Knuckey. I had a yarn with Brett in the Central Market a few weeks back.

GEORGE'S GRANDSON

After a successful season, young SA racing driver Nick Hughes was selected to drive in the Formula Ford races at the recent Australian Grand Prix meeting in Melbourne. Nick is the grandson of very proud grandpa George Ricketts.

ALEX CZORNOHALEN

Alex contacted George Ricketts via the phone book, very recently. After leaving Fortuna a few years back he 'disappeared', but is now living in Adelaide, somewhere out Salisbury North way.

TONY STEPHENS

Tony has extended the empire to include a map shop in Peel St, Adelaide. I'm not sure if this was a business opportunity brought about by Lands Dept closing the map shop it operated in Pirie St. Anyway, best of luck Tony.

BOB DIKKENBERG

Believe it or not, but Bob is still wearing his RASvy badge on his beret, as an ARES member. Dikko has studiously avoided all paperwork that would nail him to a particular corps. Although attached to HQ 9 Bde, he mostly works at 'The Castle', where he has "nod, nod, wink, wink" approval to wear the badge, for how long before the penny drops is the question.

PHIL MOORE

Phil was in the fuel supply business at Moomba for many years, but recently has been seen working at the Alma Hotel on Magill Rd, Norwood, whether as mine host or boots is not known.

BILL LOVE

Bill and Elizabeth are off to New Zealand fairly soon, for a holiday looking at the long white cloud. Bon voyage to both.

CORPS HISTORY NEWS

The application last year to the Department of Veteran Affairs for funds to have a Corps history written, has not been approved, certainly in its present form. Although very disappointing, the Canberra Brigade are not giving up, and intend pushing on whenever an opportunity presents itself.

The Ex-Fortuna Survey Association have used their own funds to the tune of \$14,000, to pay for the first year's research into their history. They have selected a local woman - Valerie Lovejoy - to do the job. Married with four daughters, Valerie graduated some years ago from the University of Melbourne with majors in History and English, and has since taught in secondary schools and the Bendigo Institute of TAFE. Her father was a lecturer in Naval History and English and served in WW2 as a commando in Timor, and her grandfathers served in Egypt, Gallipoli and France in WW1. Her maternal grandfather was Sir George Holland, who served as both Victorian President and Federal President of the RSL, so Valerie is very well credentialled to do the research and writing.

Our own local history is proceeding slowly, as it was hoped to start in earnest in early March but will now be in early May, although a lot of work in preparation has been done.

SOCIAL ACTIVITIES REPORT

Friday 7 Feb 97. Drinks after 5 at the Prince Albert Hotel. A very warm day so a beer was welcome, with 7 members attending for a pleasant chat. As we left, John Wicker headed for Hindley street to meet Tony Balkauskas, who was in town on business for a few days.

Saturday 8 Mar 97. Dinner at the Fish Cafe in Gouger St, for a convivial gathering of 10. Those who dined were Marge and George Ricketts, Pam and John Harrison, Joan and Alex Munro, Di and Harry Dunn, and Barbara and Mick Hansen.

Friday 4 Apr 97. Drinks after 5 at the Old Queen's Arms in Wright St. A round table of 8 gathered to reminisce for a couple of hours.

SOCIAL CALENDAR

Drinks after 5 at the Old Queen's Arms on the first Friday in May, June, July and August.

The Corps Birthday dinner to be held as close as possible to 1 July 97, probably Saturday 29 June, needs numbers so that planning can proceed soon. WITHOUT OBLIGATION - please indicate to Alex Munro or George Ricketts your intention of attending, as soon as possible. BUT DO IT NOW.

VALE

ELAINE STRACHAN

Elaine passed away peacefully on 22 December 1996, after her long illness. Wife of Andy and daughter of Marge and George Ricketts, the funeral service was held at Scotts Church, Adelaide, on 27 December.

The condolences of all association members are extended to Andy and family, Jamie, Matthew and Sarah, also Marge and George. She will be sadly missed by all.

HARRY BRUNE

Died at home on 7 January 1997, after suffering several illnesses over a long period.

Harry served overseas during WW2 with the 2/1 Topographical Survey Company, and during the last five years only missed our Anzac Day reunion on one occasion, although not a well man. He was a quiet person with more ability and achievement to his credit than was generally known. Our condolences to Harry's wife Margaret and daughters.

I Think all will join me in extending sympathy to Bob Dikkenberg, after the death recently of his father.